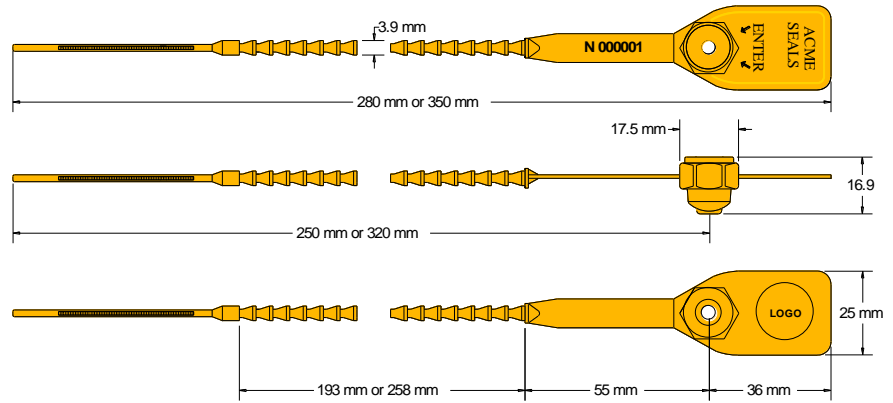




## GRIP TIGHT SEAL Data Sheet

Acme Reg No: 2003098



The Acme **Griptight Seal** is a heavy duty pull-tight seal manufactured from two dissimilar materials. The acetyl insert is durable and will withstand freezing and boiling conditions, whilst the nylon body is flexible for easy use. The design features rolled heat staking technology to secure the insert to the body, which provides clear evidence of tampering if forced open or cut. This seal is suitable for most applications where strength is a requirement.

### Technical Data

#### Recommended Applications

Airlines, Cargo, Trailers, Tankers, Rail freight, Refineries, Containers, Postbags, Lockers, Banks, Cash in Transit.

#### Material

Body - Nylon 66 with Biodegradable additives  
 Insert – Acetyl with Biodegradable additives

#### Available Operating Lengths

(L1) 25cm (overall 28cm)  
 (L2) 32cm (overall 35cm)

#### Ribbon Diameter

3.9mm

#### Tag Marking Dimensions

36mm x 25mm

#### Average Application Breaking Strength

35kg

#### Marking

Laser or Foil marking  
 Consecutively numbered as standard  
 Optional Customer name/logo  
 Optional Laser Barcoding on white foil patch

#### Colours

Foiled marked: Red, Blue, Green Yellow, Black, White  
 Laser marked: Yellow & White  
 Other colours may be available on request

#### Packaging

Standard Packaging : 5 per mat and 1,000 seals/carton  
 Carton Dimensions : (L1) - 44.5cm x 44.5cm x 25cm  
 : (L2) - 44.5cm x 44.5cm x 25cm  
 Carton weight : (L1) - 6.71kg/carton  
 : (L2) - 7.35kg/carton

